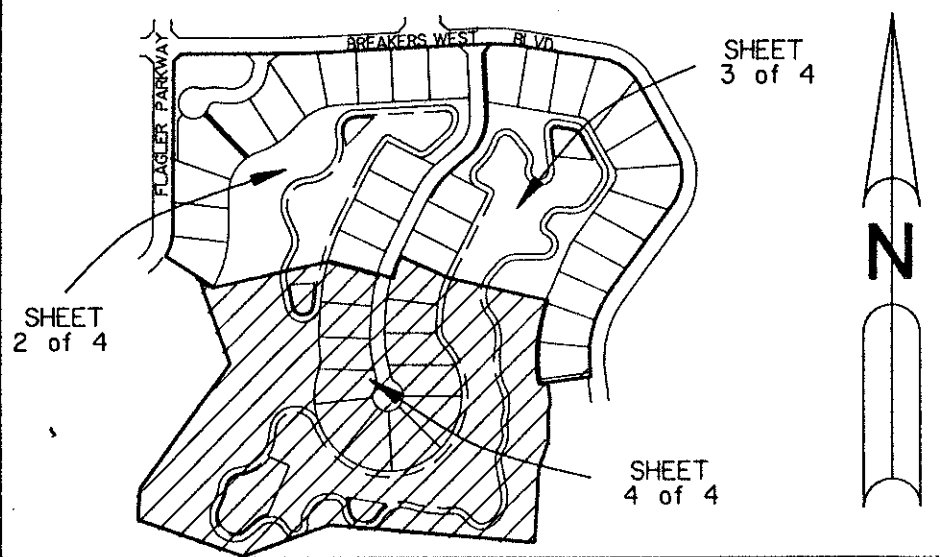


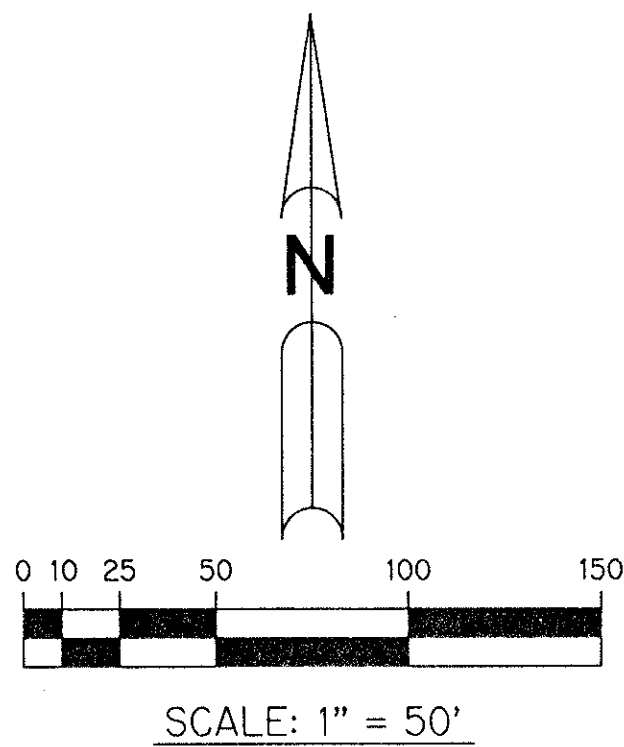
# BREAKERS WEST PLAT 18C.R.

"A PART OF A PLANNED UNIT DEVELOPMENT"  
 BEING A REPLAT OF A PORTION OF TRACT D AND ALL OF TRACT E, PARCEL 3,  
 BREAKERS WEST PLAT NO. 18, AS RECORDED IN PLAT BOOK 67, PAGES 187 THROUGH  
 194 INCLUSIVE AND A PORTION OF TRACTS 2, 3 AND 4, BLOCK 2 OF PALM BEACH  
 FARMS COMPANY PLAT NO. 3 AS RECORDED IN PLAT BOOK 2, PAGES 45 THROUGH 54  
 INCLUSIVE, ALL OF THE PUBLIC RECORDS OF PALM BEACH COUNTY, FLORIDA  
 SECTIONS 29 AND 30, TOWNSHIP 43 SOUTH, RANGE 42 EAST  
 SHEET 4 OF 4 OCTOBER, 1992

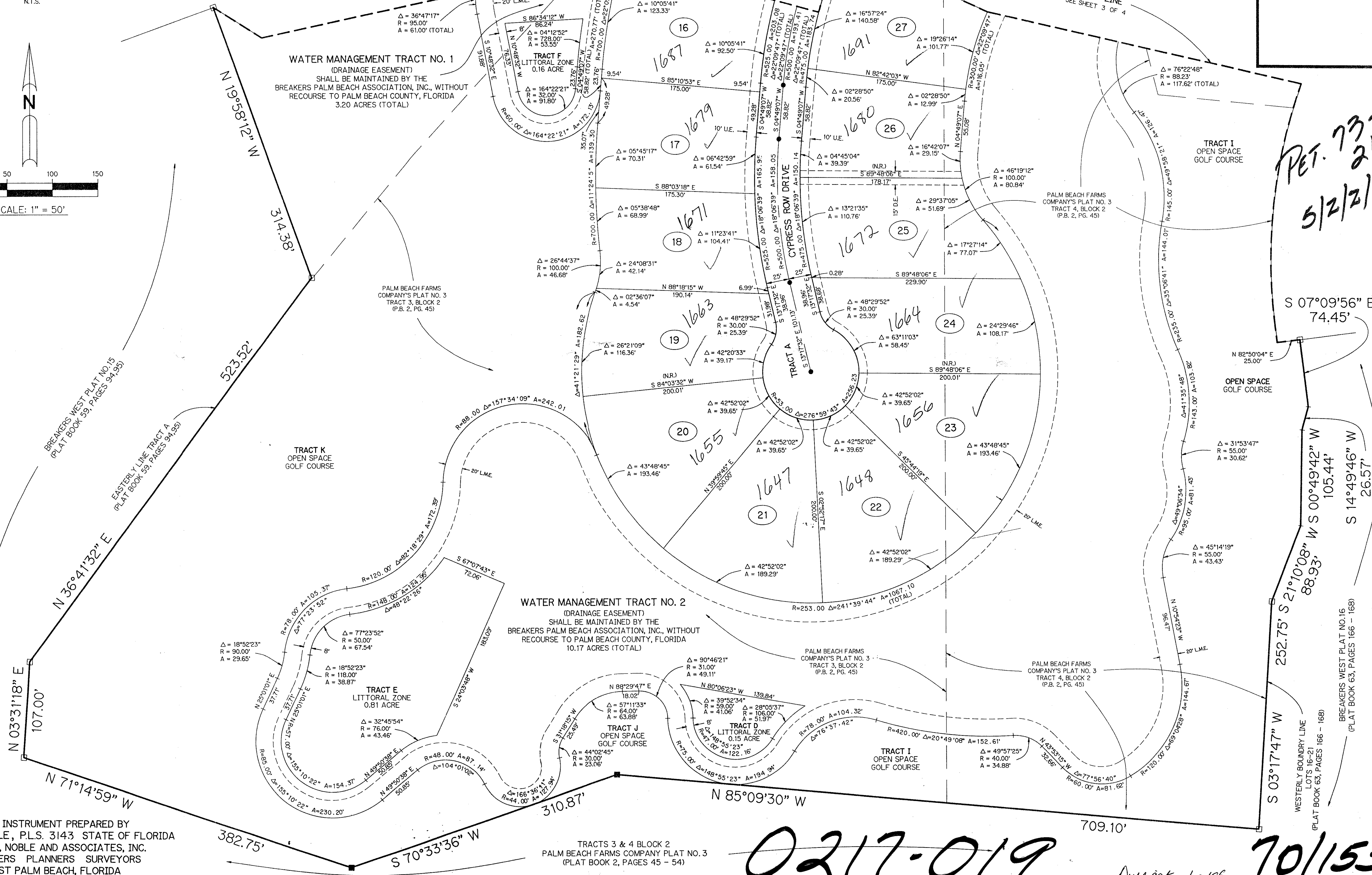
153



KEY MAP  
N.T.S.



SCALE: 1" = 50'



PET. 73-219  
5/2/2/6

TAZ = 217

SUBDIVISION Breakers West Plat 18C.R.  
 BOOK 70 PAGE 153  
 FLOOD ZONE B FLOOD MAP #150A  
 QUAD #46 ZONING RS  
 BR 73-219 ZIP CODE 33411  
 RID NAME Same  
 29/30/2012

THIS INSTRUMENT PREPARED BY  
 LEO E. NOBLE, P.L.S. 3143 STATE OF FLORIDA  
 LAWSON, NOBLE AND ASSOCIATES, INC.  
 ENGINEERS PLANNERS SURVEYORS  
 WEST PALM BEACH, FLORIDA

TRACTS 3 & 4 BLOCK 2  
 PALM BEACH FARMS COMPANY PLAT NO. 3  
 (PLAT BOOK 2, PAGES 45 - 54)

0217-019

Duplicate 4/2/16

70/153